

## PREMIUM GRAVITY SPRAY GUN



Please keep in a safe place for future reference

1. SAFETY REGULATIONS
2. PACKAGING
3. WASTE AND ENVIRONMENT
4. INITIAL INSPECTION
5. REQUIRED INSTALLATION
6. CHARACTERISTICS
  - 6.1 PRODUCTS THAT CAN BE SPRAYED
7. ACCESSORIES
  - 7.1 STANDARD ACCESSORIES AND DOCUMENTATION
  - 7.2 OPTIONAL ACCESSORIES
8. WORKING INSTRUCTIONS
9. MAINTENANCE AND CLEANING PROCEDURE
10. TROUBLESHOOTING
11. EXPLODED VIEW
12. WARRANTY
13. WARRANTY CERTIFICATE

## 1. SAFETY REGULATIONS

A misuse of this equipment may result in accidents, damage or malfunctioning. Read the user and maintenance manual carefully.

Please, bear in mind the following rules:

- Ensure that the person who is going to use the gun is trained to do so.
- Disconnect the equipment for any cleaning operation or any action on it, and decompress the circuits by pulling the gun trigger.
- Always use the equipment with approved protections (gloves, protective mask, earplugs and proper clothing).
- The place where the device is used has to be ventilated or equipped with an air extraction system (paint booth), and there should not be direct exposure to flames (cigarette, lamp) while it is working.
- Keep the working area clean and without waste (rags, solvents).
- Check the chemical compatibility of the products to be used.
- Never exceed the indicated maximum pressures.
- Never use worn, folded, broken or leaking hoses.
- Do not point the gun at people or animals.
- The gun is not suitable for children.
- Do not use the gun for those operations for which it has not been designed.
- The use of halogenated hydrocarbons products may cause chemical reactions in form of explosions, for this reason, the use of products that contain them is forbidden.

## 2. PACKAGING

The FMT9800 guns are presented in a cardboard box. All its standard accessories are inside the packaging.

During delivery and storage, the temperature has to be between 0 and 50° (32 and 122°F), and a non-excessive relative humidity.

FMT9800 Packaging	MEASURES	WEIGHT
	230 x136 x 136	850g

### 3. WASTE AND ENVIRONMENT

REMEMBER:



To get rid of polluting and dangerous products, packaging, disused equipment and tools and any type of waste produced by its activity in general, please use the suitable waste sorting and treatment point for each case. If you need any information related to this, please go to the Ministry of the Environment of your regional government or the nearest city hall.

### 4. INITIAL INSPECTION

Before using this equipment the user has to make sure that it has not been damaged during delivery or storage. Moreover, it must be checked that all the components of the equipment are inside the packaging.

### 5. REQUIRED INSTALLATION

It is advisable to always use dry, oil- and dust-free compressed air for better paint results. Before proceeding with the installation, it is necessary to carry out some inspections:

#### NOTES

- Check the hoses are in good condition (no cracks or folds).
- Check the air purifying filter of the supply is not full of water. Due to the fact that if it does not have an automatic purge, its emptying is not automatic either, so it is advisable to carry out emptying

A compressor or a compressed air line connected to the gun, the pump or the pressure tank (depending on the gun model) is required to carry out the installation.

Before connecting the gun to the compressor, close all the gun regulators (no.11 & no.14). The air hose that goes to the air flow regulator (no. 25) comes out from the compressor.

### 6. CHARACTERISTICS

The FMT9800 UV range offers the best finish at the best price. It is designed to give a medium-high finish quality. The air consumption is shown below:

FMT9800	PRESSURE	CONSUMPTION
	2 BAR	160 l/min.

Please keep in a safe place for future reference

Fast Mover Tools tests all guns before they leave the facilities, assuring optimum operation.

Technical data	Prima Pro
Mim. compressor	2 CV
Available setups	1.2 ,1.3, 1.4, 1.8
Standard nozzle	1.75
Body	Stamped and anodized aluminum
Pollution level	Low
Max. inlet air pressure	4 bar
Max. working temperature	50°
Weight	635 gr.
Air inlet	CR 1/4 M
Product supply	Gravity

Technical data are indicative and can be changed without prior notice, if an improvement of the product is considered with it.

## 6.1. PRODUCTS THAT CAN BE SPRAYED

The gun is designed and recommended to spray:

- UV Paints
- UV Primers
- Tintable fillers
- High solid fillers
- Lacquers
- Varnishes
- Dyes
- Powdered glue
- Primer coat
- Forge type
- Primers
- Enamels

## 7. ACCESSORIES

### 7.1. STANDARD ACCESSORIES

Fast Mover Tools delivers the gun with the following accessories and documentation:

- UV Protective Air Cap
- Filter
- 750 CC. Nylon Tank
- Multipurpose Spanner
- User And Maintenance Manual
- Warranty Certificate



### 7.2. OPTIONAL ACCESSORIES

Fast Mover Tools offers a wide range of optional accessories:

#### CONNECTION HOSE

AIR HOSE Blubird range of hoses. Length from 5mtr to 20mtr and either 8mm or 10mm.

## COMBINATION CHART

Complete set	Fluid tip + Needle	MAX nozzle
FMT50215 120 INOX	FMT50556 120 INOX	FMT50213 1 B
FMT50215 130 INOX	FMT50556 130 INOX	
FMT50215 140 INOX	FMT50556 140 INOX	
FMT50215 175 INOX	FMT50556 175 INOX	

## 8. WORKING INSTRUCTIONS

1. Close the gun regulators (no.11 & no.14).
2. Prepare the product to be sprayed (according to the manufacturer's instructions).
3. Loose the product regulator (no.11), point the gun at a paint pit or a test surface and pull the trigger until the paint comes out.
4. Adjust the air inlet pressure from the regulator (no.25) until you get the desired flow.
5. Adjust the fan width (no.14) and the product regulator (no.11) until you achieve the desired paint pattern.

## NOTES:

- Always use the gun in a perpendicular position to the area to be painted.
- Avoid working only with a wrist movement.
- Do not forget that cross coats do not cover evenly.
- Spraying with an immobile gun causes a local overload. Therefore, do not pull the trigger before starting to move your arm, and do not release it before finishing the movement.
- Try to get a spraying with regular and constant thickness between the different coats.

## 9. MAINTENANCE

The ordinary maintenance of the gun is very simple as it does not require any special operation. To ensure the proper functioning, you only have to clean the paint circuit after finishing the activity. A recommendation for the product to last longer is to use well filtered paints and avoid paints which block the nozzle easily.

## CLEANING PROCEDURE:





1. Replace the paint with solvent.
2. Adjust the air to the minimum working pressure (around 1 bar).
3. Pull the trigger until the whole circuit is completely clean.
4. Clean the air nozzle with a cloth and a brush.
5. Clean the gun body with a cloth.
6. Lubricate all the moving parts.

#### CLEANING NOTES:

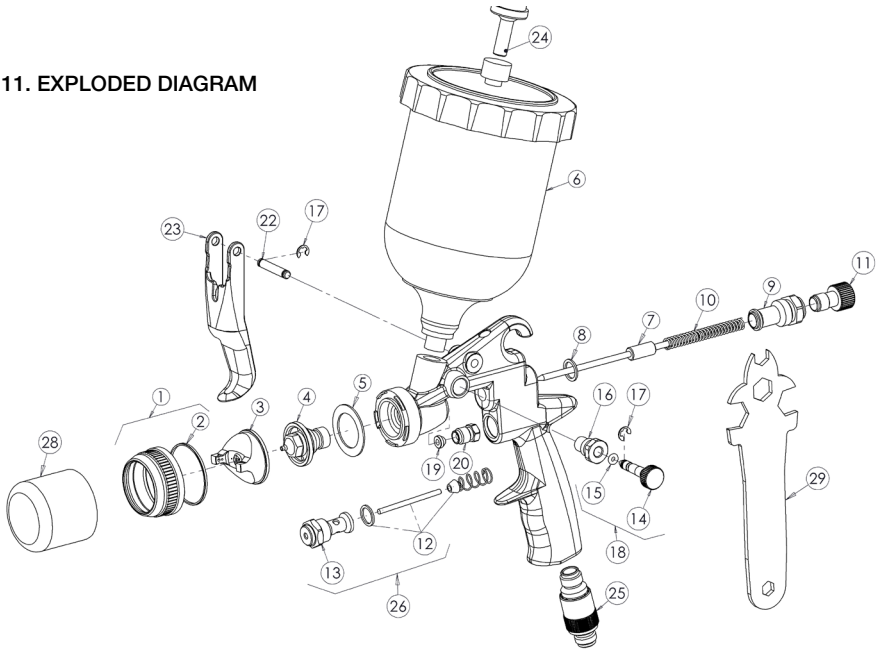
- If the cleaning is done in an industrial washing machine for spray guns, the air and product regulators have to be closed (so that the solvent does not damage the joints). Dry the gun with a blowing gun once the cleaning cycle has finished.
- Do not use metallic brushes for cleaning.
- Never sink the gun into solvent.

#### 10. TROUBLESHOOTING

A table with incidents that the user can solve himself is shown below.

	CONDITION	POSSIBLE CAUSE	SOLUTION
I	No spraying	a. No pressure in the gun	Check the air and product hoses
		b. Bad regulated flow regulator	Regulate it
II	Incorrect spraying	a. Bad regulated spray gun	Correct it
III	 Pattern shape	Blocked nozzle	Clean the nozzle
IV	 Pattern shape		
V	 Pattern shape	Too thick or too much material	Dilute or reduce the amount of material
VI	 Pattern shape	Little material	Reduce the air pressure or increase the product flow
VII	Intermittent spraying	a. Not enough material in the tank or blocked duct	Fill the tank or check/clean the hose
		b. Blocked gun material duct	Clean the gun ducts
		c. Worn packing seal or loose packing screw	Change or tighten the packing seal
		d. Damaged or loose fluid tip	Change or tighten the fluid tip
VIII	Fluid loss through the packing screw	a. Loose packing screw	Tighten, check the needle to make sure there is no movement
		b. Dry packing seal	Lubricate the packing seal
		c. Worn packing seal	Change the packing seal
IX	Leaking fluid tip	a. Dry packing seal	Lubricate the packing seal
		b. Blocked needle	Lubricate the needle
		c. Packing screw too tightened	Too tightened packing screw
		d. Worn nozzle	Change the fluid tip

# 11. EXPLODED DIAGRAM



Technical data		FMT9800
No.	Reference	Description
1	FMT9800/50566B	Nozzle nut
2	FMT9800/50267B1	Joint, 1 unit
3	FMT9800/50213XB	Nozzle (See Combination Chart - Page 5)
4+7	FMT9800/50556XXXINOX	Fluid tip + needle (See Combination Chart - Page 5)
5	FMT9800/505981B	Joint, 1 unit
6+24	FMT9800/50641B	Tank + filter
8	FMT9800/500111B	Joint, 1 unit
9	FMT9800/50206B	Bushing
10	FMT9800/502141B	Spring, 1 unit
11	FMT9800/50014AZULB	Product regulator, 1 unit
12	FMT9800/50016	Valve closing
13	FMT9800/50069B	Valve kit
14	FMT9800/50595AZULB	Fan regulator
15	FMT9800/50596B	O-ring, 10 units
16	FMT9800/50059B	Fan regulator nut
17	FMT9800/500061B	Seeger ring, 2 units
18	FMT9800/50597AZULB	Fan regulator set
19	FMT9800/501371B	Packing, 1 unit
20	FMT9800/501381B	Packing nut, 1 unit
22	FMT9800/50586B	Stud bolt, 1 unit
23	FMT9800/50038B	Trigger
25	FMT9800/50022AZULB	Air inlet regulator
26	FMT9800/50070	Complete valve
27	FMT9800/10CR1/4HBLISTER	Air inlet connector
	FMT9800/50215XXXINOX	FMT9800 Service pack (See Combination Chart - Page 5)

12. WARRANTY

This equipment is covered with a 2-year warranty from the date of purchase. The guarantee covers against manufacturing faults and components defects. Only repairs and elements substitution carried out by technical staff of Fast Mover Tools are covered. Faulty pieces will be sent carriage paid.

Warranty does not cover:

- Faults or damages caused by improper use of the equipment.
- Faults or damages caused by the use of spare parts different from the original ones or those recommended by Fast Mover Tools.
- Faults or damages caused by bad maintenance.
- Components subject to wear (nozzles, filters, etc.).

Warranty is void:

- Whenever repairing operations or components substitutions are carried out without prior authorization of Fast Mover Tools.
- Whenever the serial number is removed or manipulated.
- Whenever it is checked that the fault has been caused by improper use or if the equipment falls, is bumped or by other causes not due to normal working conditions.

All repairing interventions carried out under warranty will not entail a stoppage or extension of the warranty period.

13. WARRANTY CERTIFICATE



Model: FMT9800

Date of purchase:

Serial number:

Purchaser: .....

Distributor Stamp:

Address: .....

City: .....

Please look after the environment, dispose of all packaging in a responsible way. Always dispose of tools in accordance with local authority guidelines.

© 2022 Fast Mover Tools Ltd. This document is copyright and is not to be copied, circulated, distributed or shown to anyone other than the intended recipient without the express permission of the directors.

