

ELITE LEVEL WAX INJECTION GUN



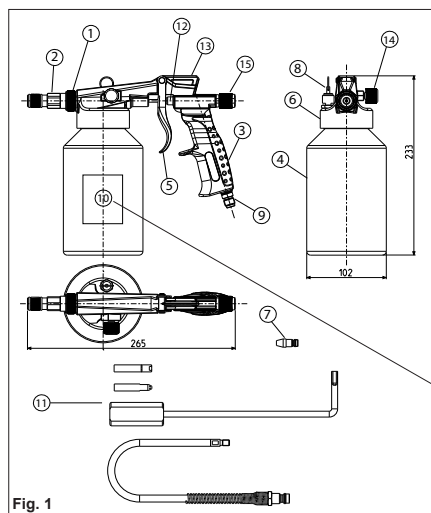


Fig. 1

**PRODUCT IDENTIFICATION**

- 1 - CAP HOLDER FASTENING RING
- 2 - PROBES QUICK COUPLING
- 3 - HANDGRIP
- 4 - TANK
- 5 - CONTROL TRIGGER
- 6 - TANK HOUSING
- 7 - STRAIGHT NOZZLE
- 8 - SAFETY VALVE 8 BAR / 116 PSI
- 9 - FEEDING: 1/4 GAS MALE THREADED CONNECTOR
- 10 - MARK
- 11 - SONDE
- 12 - AIR VALVE
- 13 - FASTENING HOOK
- 14 - HANDWHEEL REGULATOR
- 15 - HANDWHEEL REGULATOR OF MATERIAL CAP

**1 - GENERAL WARNING**

- ⚠** This symbol guides your attention to points that concern your safety. Please read carefully and follow the instructions listed in this section. Before using the Wax 3, read the operating instruction thoroughly and follow them. Before carrying out any type of maintenance or repair operation, ask information to your retailer or from specifically trained technician otherwise your warranty will nullify voluntary. Before performing every maintenance operations, internal cleaning or a tank re-fill always disconnect the Wax 3 from the air supply. Before using the cleaner product to be sprayed with the Wax 3 Pressure Cup Spray Gun, verify that it is in fact compatible with the work environment and the individual safety devices employed, according to the product safety sheet. While operating the Wax 3, wear the appropriate safety garments and devices (gloves, glasses, masks, overalls, etc.) according to the instructions listed in the product safety sheet. The use of safety protection glasses is always recommended. Hang the Wax 3 on the special hook when it is not being used, so as to guarantee its vertical position. Never tilt the Wax 3 at an angle greater than 45°, while operating it, in order to avoid inconvenient with the product flow. Regularly check the free movement and the efficiency of the safety valve (8). Do not use the Wax 3 in case the safety valve is stuck. In this case contact the dealer who sold you the Wax 3.

**2 - SAFETY WARNING****2.1 Danger of fire or explosion**

- ⚠** Do not use solvents and/or halocarbon based detergents (1.1.1 Ethyl trichloride, Methylchloride, etc.) since they could rust galvanized parts causing even explosive chemical reactions. Never use acidic or alkaline substances for cleaning (basics, paint-re-movers, etc.) Check the flash point of the product used and pay utmost attention to the ambient temperature where you are working so you are aware of the dangers. Make sure that there are no ignition sources such as free flames, sparks, incandescent wires or high-temperature surfaces in addition to tools, electric tools or other devices not certified for use in explosive or potentially explosive atmospheres in the work environment. Mechanical contact of the device with other metals might generate sparks so do not strike steels or oxidised or rusty metals.

**2.2 Health safety equipment and precaution**

- ⚠** Use the Wax 3 only in well ventilated areas. Always wear suitable protective gloves and goggles as well as specific breathing filters/masks. Use working clothes to protect the body from contact with vapours, mists directly with the products liquids. Please, refer to the safety data sheet of the product for all the security informations.

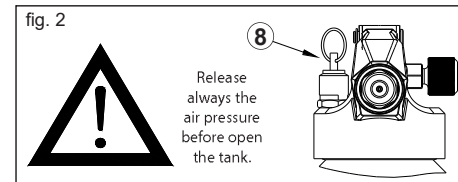
**2.3 Warnings concerning improper use**

- ⚠** After cleaning, maintenance and/or repairs and, in any case, before using the Wax 3, make sure nuts and bolts are firmly secured in their housings. Never direct the jet towards people or animals. Never exceed the maximum pressures 8 bar/116 PSI. Do not clean the parts and especially the threads (in particular the fillet of the tank) with abrasive brushes or sandpaper.

**2.4 General risk**

- ⚠** The applicator must not be used if it has been subjected to potential damage following a bang or a fall which may have compromised its resistance, in particular regarding endurance, adjustment or pressure parts. Negative effects may not be immediately visible in terms of fractures, cracks or other similar effects. If any of the said events occur do not use applicator, but have inspections and testing carried out on it before putting it back in service. If you have any doubts please contact the salesman before using the product. Check the thread of the pressure cup for wear at regular intervals. Check the threading of the tank at regular intervals. Lubricate the thread of the tank with the TFO-LF lubricant after each application. The applicator must not be used, not even if clearly worn, oxidised or in terrible maintenance condition, unless following a total overhaul performed by an authorised retailer or producer. The edge of the tank may be sharp and injure hands, so using the applicator with special work gloves is recommended.

- ⚠** Working pressure 4 - 6 bar ( 58 - 87 PSI)  
**⚠** Max pressure 8 BAR / 116 PSI.  
**⚠** Screw completely the tank at the gun before connect the air supply.

**3 - INTENDED AND FORBIDDEN USES**

- ⚠ ATTENTION:** Wax 3 tank must be used when using the applicator in a potentially explosive atmosphere. The use of different or of third-party tanks is strictly prohibited.

**CAUTION**

- ⚠** NEVER USE HALOGENATED HYDROCARBON SOLVENTS, as these can damage or cause melting of the aluminium gun parts due to chemical reactions. Incompatible solvents include: Methyl chloride, Dichloromethane, 1.2-Dichloroethane, Carbon tetrachloride, Trichloroethylene, 1.1.1 - Trichloroethane.
- ⚠** The presence of free flames and the generation of sparks is severely prohibited during and after use of the Wax 3. The products might be highly inflammable and therefore a possible cause of serious fires. Avoid any conduct that may give rise to sources of ignition, such as smoking, generating sparks in mechanical or electrical processes, or working in precarious safety conditions.
- ⚠** Connect the Wax 3 directly to earth, using a mobile spiral conductive tube (resistance of less than 1 Mega Ohm), checking earthing efficiency periodically.
- ⚠** Use the Wax 3 in well ventilated areas, using the spray painting booth; inadequate or insufficient ventilation will increase the risk of explosion and may lead to intoxication by the solvents.
- ⚠** Always wear the specified personal protective equipment prescribed by this manual and product safety sheet; in the event of physical injury seek medical attention immediately.
- ⚠** Prolonged and constant use of the Wax 3 may cause syndromes related to physical stress; in the event of limbs fatigue, suspend painting operations to rest.
- ⚠** Due to the high speed paint flow during high pressure spraying, in certain circumstances electrostatic charge may accumulate on equipment, and in particular on the Wax 3. During the discharge phase, these charges may cause the formation of sparks or flames. Always ensure the Wax 3 is grounded.
- ⚠** Use exclusively lightly oxidising gas for nebulising, and possibly compressed air.
- ⚠** If scale forms on the surface of the equipment, this may also cause electrostatic charges. Discharging may generate flames or sparks. Remove all scale to maintain electrical conductivity.
- ⚠** PLEASE NOTE: the applicator is not designed to work in dusty areas, especially if the dust is flammable or highly flammable. Pay utmost attention to the deposits of dust in the surrounding environment, in the work area and on the applicator. Do not work if you are unsure of the type of dust and whether or not it might become ignited.
- ⚠** The safety valve causes a strong flow of air when it releases the pressure from the tank. Pay attention to ears and eyes in addition to any build-up of dust or substances that might be scattered around the work area.
- ⚠** Make sure that the work area floor is dissipative and anti-static, and that every one inside the work area is wearing anti-static shoes and all personal protective equipment prescribed for that area. The personal protective equipment must ALWAYS be present and available for every one involved in the use operations or inside the work area.

## 4 - LIMITATIONS OF THE APPLICATOR

### 4.1 INTENDED USES

- Spraying of liquid, sound deadening, stone foil, bituminous products, waxes for boxed structures, protective and soundproofing products.
- Use only in safe conditions as indicated in this manual, in a well-lit work area with good visibility and good ventilation; the work area must be user-friendly for the operators, without hazardous impediments or obstacles so they can work properly and risk-free. The presence of unspecialised or unauthorised personnel must be restricted to sole necessity, and knowledge of the standard safety and fire prevention measures in the area is mandatory.
- Maintain and clean the Wax 3 as indicated in this manual. Pay attention to chemical compounds, detergents and similar products.
- Use only after reading and understanding the contents of this manual and the current service information for the product used.
- Disconnect the air from the Wax 3 before maintenance, cleaning or refilling.
- Get ready to work by checking the earthing, the efficiency of the tools to be used, that the PPE is present and by looking for any risk or hazard conditions in the area.

### 4.2 REASONABLY PREVENTABLE INCORRECT USES

- Use products other than those mentioned above.
- Work partially applying the environmental and safety instructions this manual contains.

### 4.3 PROHIBITED USES

- Spray paints, dyes and/or other chemical substances not expressly indicated in this manual.
- Use the applicator without have read and learned this manual.
- Point the applicator toward yourself, other people, animals, plants or other objects that aren't intended to be treated.
- Exceed the maximum pressure of 8 Bar/116 PSI.
- You must wear the personal protection equipment indicated in this manual.
- Use HALOGENATED HYDROCARBONS such as solvents or liquid detergents, as indicated in the warnings.
- Cause or bring flames, sparks, high temperature surfaces or potential ignitions of the like due to electrical and non-electrical equipment into the work area.
- Operate the Wax 3 without having read or understood the content of the product technical and safety sheets.
- Modify the applicator or its parts in any way.
- Continue to use the applicator after detecting failures or malfunctions of the apparatus or related equipment.
- Work in dusty areas with flammable or highly flammable dust.

## 5 - PACKAGING AND STORAGE

The Wax 3 is supplied in single 350x280x110 mm cardboard boxes. Gross weight 1,552 kg Net weight 1,445 kg  
It must be stored in non-humid environments, at the temperature between -15° and +40°C.

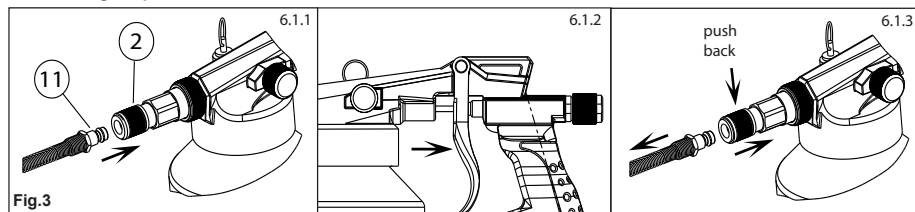
## 6 - SET-UP AND REGULATION OF THE APPLICATOR

The applicator is equipped with two sequential operation modes, set by the control trigger (5).

With a gently press on the control trigger a first block will be sensed, this is the First Time, it allow the air, only the air, to flow from the applicator. Applying a stronger press on the control trigger the First Time block will be surpassed, this will activate the Second Time, it allow the mixture of air **and** product to flow from the applicator.

**⚠** Always disconnect the air supply before operating on the Wax 3 or taking away the tank (4).

### 6.1 Installing the probe

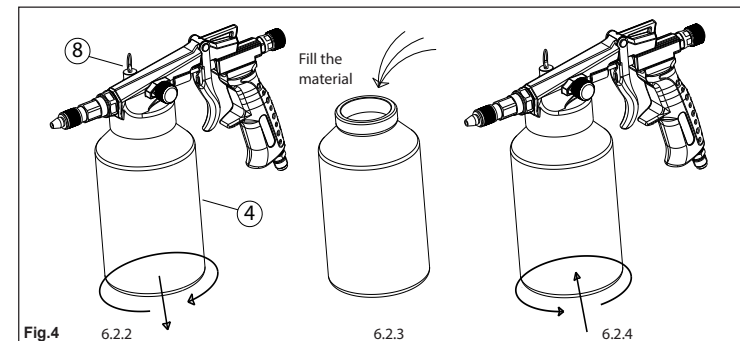


6.1.1 Insert the probe (11) male quick coupling into the applicator socket (2), if the coupling doesn't enter in it, push the socket ring back (2) and insert the coupling (11).

6.1.2 Before disconnect the probe, use the First Time to eliminate every product residue inside the probe.

6.1.3 To disconnect the probe, push the socket ring back (2) and extract the quick coupling (11).

### 6.2 Supply



**⚠** Screw always the tank (4) until the bottom before to put in pressure the applicator.

**⚠** Every time needs the opening of the tank, it is obligatory to release the air content, pull the pressure discharger ring (8).

6.2.1 Disconnect or close the compressed air supply, pull the safety valve ring (8) in order to discharge the pressure from the tank (4).

6.2.2 Unscrew the tank clockwise.

6.2.3 Fill the material into the tank (max 1 lt).

6.2.4 Screw on the tank counterclockwise.

### 6.3 - ADJUSTMENT

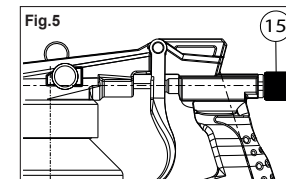
**⚠** Never close the handwheel regulator of the air (14), otherwise it cloud daub the applicator.

#### Standard adjustment:

- Working pressure 3 - 4 bar .

- Open the air by turning of at least half a turn the handwheel regulator of the air (14) and adjusting the product's flow by the handwheel regulator (15).

- Assembly the extension for the work that you have to do.



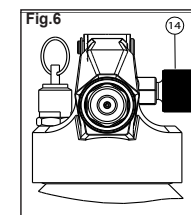
#### 6.3.1 Adjusting of the product quantity (fig. 5)

Turn handwheel regulator (15) clockwise so as to gradually reduce decrease of product flo. Turn anti-clockwise to increase rate of product flow.

#### 6.3.2 Adjusting product pulverisation (fig. 6)

**⚠** Never totally unscrew the air adjustment flywheel (14).

Turn the flywheel (14) clockwise in order to close the passage of air gradually (never totally close flywheel no. 14) with consequent reduction of the atomisation. Turn the flywheel (14) anti-clockwise to open the passage of air gradually, with a consequent increase of atomisation.



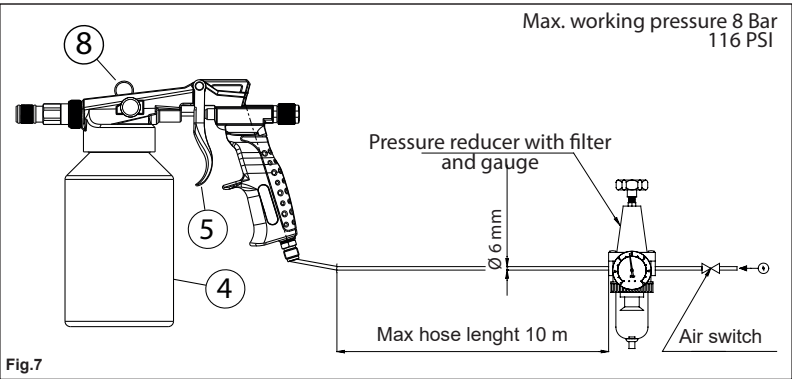
6.4 - STARTING

**A** To connect the system to the Wax 3 and ensure its earthing, use a spiral conductive hose for dynamic laying with resistance lower than 1 mega Ohm. Be sure that the hose is chemically stable with the products used and that it carries the information on the allowed maximum and working pressure and the date of production (and expiration date, if any), and periodically check the earthing and efficiency of the hose

**A** A disconnection switch and a pressure reducer with filter and gauge have to be between the applicator and the compressed air system, and the connection hose must not be any longer than 10 m. (Fig.7).

6.5 Technical Data and Air supply installation

- 6.5.1 Weight (without material) 1.445 g.
- 6.5.2 Air connection thread ¼ gas male threaded connector
- 6.5.3 Tank contents 1 lt
- 6.5.4 Nozzle Size Ø1.7 mm
- 6.5.5 Air consumption 200-300 L/min..
- 6.5.6 Working pressure 4 - 6 BAR / 58 - 87 PSI
- 6.5.6 Maximum working pressure 8 BAR / 116 PSI
- 6.5.7 Recommended max length of the tube 10 m.
- 6.5.8 Minimum internal cross-section of the tube 6 mm.



- A** Before Wax 3 start-up, wear the individual safety devices:
- Safety gloves
  - Ear defenders
  - Safety glasses
  - Anti-static footwear
  - Dust/Gas mask of adequate category.
  - Ensure that the applicator, the parts to be treated and the operator are grounded.



7 - USING THE EQUIPMENT

- 7.1. Starting, use, supply and installing the probe see paragraph 6.
- 7.2 For the pneumatic connection to the air supply, see point 6.5 Fig.7.

**A** Do not tilt more than 45°

- 7.3. Point the Probe towards the object you want to treat. Fully push the trigger (5) of the Wax 3.
- 7.4. After the completion of the works, clean the probe as described at point 6.1, disconnect or close the compressed air supply then discharge the pressure from the applicator tank pulling the air valve ring as per point (8). Empty completely the tank and flush it with clean water. Collect the obtained cleaning moisture in a container. Do NOT dispers it into the environment and dispose it accordingly to your country laws.

8 - RESIDUAL RISKS

- 8.1 Potential sources of ignition such as sparks, flames, electric arcs, high surface temperatures, acoustic energy emissions, optic radiation, electromagnetic waves or other sources have to be avoided.

9 - TROUBLESHOOTING

PROBLEMS	CAUSES	CORRECTIVE ACTIONS
The Wax 3 does not spray when control trigger is pressed	No supply	Verify the air supply connection. Verify if there still material in the tank.
Irregular spraying	Supply tube dirty or clogged	Clean all ducts and spraying nozzle, do not tilt the Wax 3 at an angle greater than 45°.
The tank does not unscrew	Residual pressure in the tank	Pull the ring of the safety valve (Fig. 2; nr.8).

10 - MAINTENANCE AND CLEANING

10.1 Cleaning

- A** Ensure that the flash point of the detergents is at least 5° > of the current ambient temperature.
- A** Make sure that the air-product adjustment handwheel regulator (fig. 1 nr.15) is completely closed to avoid atomization of the solvent which may lead to pollution of the nearby environments

- 10.1.1 Disconnect the applicator from the air supply.
- 10.1.2 Empty out the product from the applicator.
- 10.1.3 Fill the tank halfway with clean water or detergent suitable for the product used.
- 10.1.4 Rinse the tank making the the water or detergent inside it whirl round. Close the tank and connect the Wax 3 again.
- 10.1.5 Spray all the water or detergent into an appropriate container.
- 10.1.6 Disconnect, release the pressure from the tank and open it, pour the liquid into a suitable container. Do NOT dispers it into the environment and dispose it accordingly to your country laws.

10.2 Maintenance

- 10.2.1 Never use force. Using improper tools such as pipe wrench, gas torch, etc. will void any warranty. In many cases proper repairs can only be carried out with the aid of special tools. In such cases, limit yourself to establishing the cause of the problem and leave the repairs to the service department. We will refuse to accept liability for faulty functioning of the applicator if it is disassembled by the customer.

11 - NOTE REGARDING REACH REGULATION NO. 1907/2006

According to the obligations of the above-mentioned regulation, the manufacturer reports that: some components of the series WAX 3 applicators contain a concentration of lead (Pb) CAS: 7439-92-1 greater than 0.1% calculated weight/weight, precisely in the brass parts and in some aluminium alloys a varying percentage but in any case less than 3% considering weight on weight.

Lead (Pb) is contained in the list of SVHC (Substances of Very High Concern) candidates of the ECHA (European Chemicals Agency).

12 - DISPOSAL

The components of our WAX 3 applicators are mostly made with highly recyclable materials. Please deliver the applicator to a qualified waste disposal centre so that it is disposed of in the proper manner and that its parts are sent to recycling. The information provided in point 11 must be notified to the waste disposer/recycler of the applicator.

13 - WARRANTY

The quality of the products supplied is covered by a warranty of 12 months. The warranty is valid as of the date of billing and is based on this date. The warranty is automatically rendered null and void if the product:

- shows signs of tampering
- shows signs of wear in itself or in the materials making up the product, due to lack of or incorrect maintenance
- shows signs of lack of cleaning, maintenance or incorrect storage other than as specified in the operation and maintenance manual supplied with the product
- is used other than as intended in design or as specified in the operation and maintenance manual and on the reference data plates.

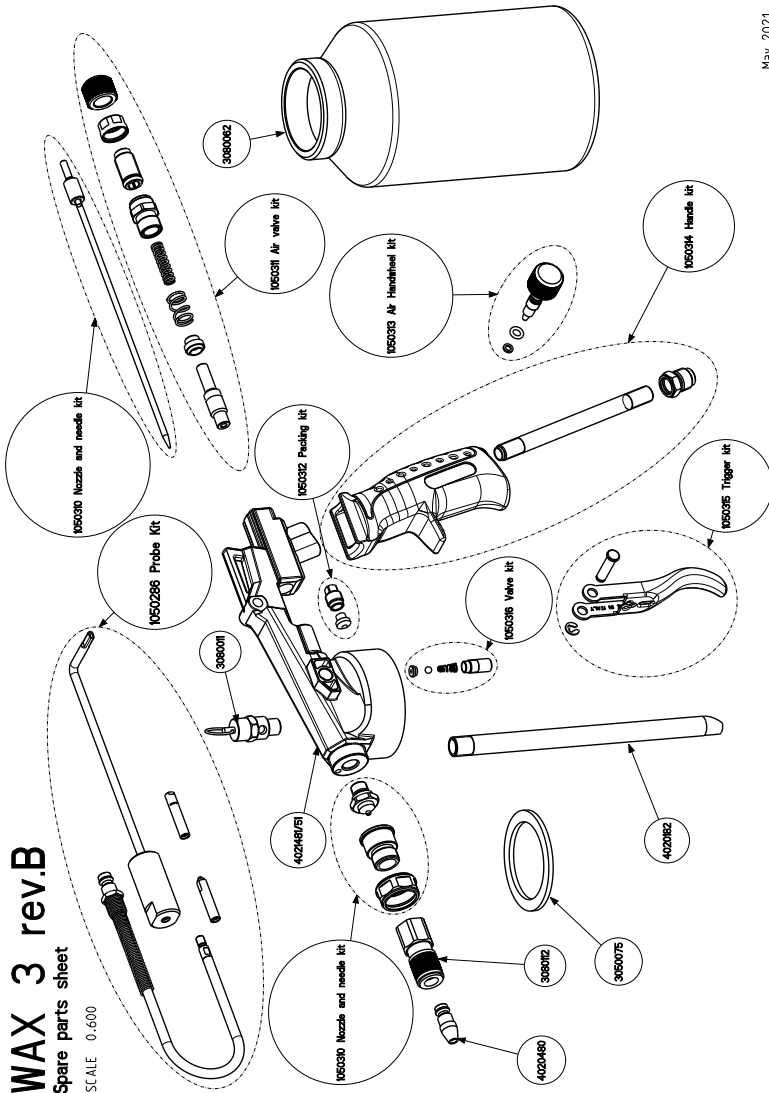
The warranty is also automatically rendered null and void if when returned the product:

- is not in its original packaging and/or accompanied with the relative administration documents;
- In the case of damage, accidents or faults not attributable to the manufacturer but caused or deriving from causes attributable to transport, inadequate or improper packaging or if in any way damaged.

All product returns must be exclusively carriage paid.

Please keep in a safe place for future reference

May 2021



Please look after the environment, dispose of all packaging in a responsible way. Always dispose of tools in accordance with local authority guidelines.

© 2022 Fast Mover Tools Ltd. This document is copyright and is not to be copied, circulated, distributed or shown to anyone other than the intended recipient without the express permission of the directors.



Fast Mover Tools Limited  
1 French's Ave, Dunstable LU6 1BH

**T:** +44 (0)1582 661993 **E:** [sales@fastmovertoolsuk.com](mailto:sales@fastmovertoolsuk.com) **W:** [www.fastmovertoolsuk.com](http://www.fastmovertoolsuk.com)

