

MANUAL HIGH PRESSURE SPRAY GUN



Please keep in a safe place for future reference

IMPORTANT

Please read through this manual carefully before using the FMT4765. This tool must only be used for spraying and within the parameters outlined in this manual. All users of the equipment should be trained in any risks associated with the products they are spraying or using as spraying and finishing aids.

WISE PRECAUTION

This product is free from contaminants. However, we do recommend that you flush your gun through with a suitable thinner before use as a preventative precaution.



1. INFORMATION OF THE MANUAL

The “use and maintenance manual” is the document that follows the equipment from its construction until its demolition. It is therefore an integral part of the unit and requires your full attention before any activity involves the equipment.

2. GENERAL SAFETY INSTRUCTION

2.1. Warnings for the operator

Operator must know content of this manual. Keep manual always near the working place.

2.2. Safety in workplace

Ensure that all persons in the work area during spraying, wear the personal protective equipment. Make sure the environment has no ignition sources such as open flames, sparks, etc. or hot surfaces.

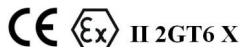
2.3. Grounding the equipment

During spraying, due to the speed of paint flow, in particular situations may accumulate on the equipment electrostatic charges that in discharging phase may generate sparks or flame. Due to this particular condition, ensure the appliance has proper grounding through a fluid supply hose and pump.

2.4. Explosion protection identification

As defined in the Directive 94/9/CE (ATEX), the unit is suitable for use in areas where there is an explosion hazard.

CE: European Community
Ex: Symbol for explosion protection
II: Unite class II
2G: Category “ (zone 1); Ex atmosphere gas
T6 X: Temperature class: maximum surface temperature 85°C



3. WARRANTY

3.1. Explosion protection identification

All equipment from Filtermedia Srl are guaranteed for a period of 12 months from invoicing date, unless otherwise agreed in writing. This warranty applies only when the equipment is installed, operated and maintained in accordance with Filtermedia Srl written recommendations. The warranty covers all defects of material, manufacturing and provide replacement. This warranty is conditioned upon the prepaid return of the equipment claimed to be defective for verification of the claimed defect. If the claimed defect is verified, we will repair or replace free of charge any defective parts. The equipment will be returned transportation prepaid. This warranty does not entitle for any request for compensation from damages directly or indirectly caused from our equipment to persons or objects or intervention made from buyer or by third parties. Warranty does not cover parts subject to normal wear and tear.

This warranty is void when:

1. Filled form in attachment is not returned;
2. In case of non payment or contract default;
3. Repairing or modification made without our permission;
4. Tampered equipment;
5. Damage caused by misuse, lack of maintenance, falls or other causes not ascribed to normal operating functions.

4. DESCRIPTION

4.1. Packing

The unit is contained within a carton box. All series components are included in same box. During transport and storage make sure that temperature will be between - 15° and 40°C and for short period (max 24 hours) +50°C which may cause damages to the gun. Storage place should be with damp from 30-80%.

4.2. Description

Manual spray gun FMT4765 is employed for high pressure (250bar) painting application and the pulverization of paints. Micro-atomizers reduce paint-fog and leave coated surfaces smooth and uniform. This gun is solid and light, perfect for long works without problems.

4.3. Workable products

Employable materials: paints and synthetic enamels, polyurethane, primers, mono-components, double-layer metalized paints, bi-components, water based paints.

For gun uses with special products it necessary to require approval from producer in order to conform technical features of machine for processing indicated special products.

FILTERMEDIA SRL is not responsible for injury which might be caused from personnel not trained or not authorized and for using machine for different purposes as indicated.

It remains in any cases forbidden to use the gun for distribution of inflammable products or high toxic elements like gasoline, herbicides, pesticides.

4.4. Technical data

- Max Wp: 250bar
- Fluid Inlet: ¼", 16x1.5, ½" JIC, 3/8"
- Filter: Gun filter (standard FM2002, 50M)
- Weight: 630 gr

4.5. Setting-up

Gun should be powered with a max. pressure of 250bar. For set-up proceed as follow:

- Lock the trigger
- Connect fluid hose; use only hose for high pressures
- Check the filter
- Check pressures in every parts of the system
- Ground the spray gun through connection to a properly grounded fluid supply hose and pump
- Adjust working pressure and check every connection
- Unlock the trigger, and make sure it closes perfectly when you release it

Painting process must be performed in a spray booth with aspiration system. Do not use the unit if aspiration system doesn't work.

4.6. Procedure for pressure discharge

When the system is shut down for plant maintenance or at the end of the working process, it is COMPULSORY to completely discharge the high pressure present in the system. By closing the general air supply, air is automatically discharged to the motor of pump.

Attention: product flexible hose is still with pressure. Proceed as follow:

- Lock the trigger
- Turn off the air supply
- Unlock the trigger
- Hold a metal part of the gun firmly to a grounded metal pail. Trigger the gun to relieve pressure.

5. MAINTENANCE

5.1. Ordinary maintenance

Ordinary maintenance of Gun FMT4765 can be easily made. In order to guarantee the best performance, guns require daily cleaning, and in any case, at the end of working activities, residual liquid should be removed in order to avoid material drying out into paint system.

5.2. Change of packing gland

Completely discharge the pressure, dismantle finger guard, nozzle, spreader, adjusting knob, spring and 3mm nut. With a 8mm wrench, unscrew the needle from the front side of the gun. Remove the piston, unscrew packing gland screw, remove pressure washer and replace packing gland with new one.

5.3. Cleaning

Discharge pressure, disassemble finger guard and nozzle. Check damage to gaskets, and if broken or damaged, replace them. Check the nozzle very carefully and plunge into solvent in order to remove any internal residual material, blowing air from the rear part to eliminate all impurities. The nozzle should be reassembled with the gasket. Disassemble the sleeve body and clean well with a brush especially the seat of the ball.

Do not use metal tools to clean the air cap holes as this may scratch them; scratches can distort the spray pattern. Lubricate periodically packing gland ring. Lubricant should not contain silicone.

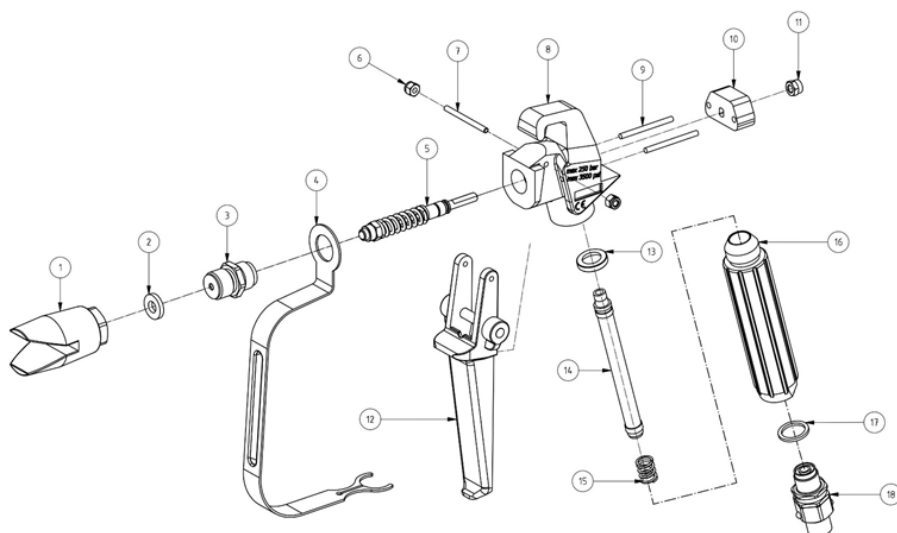
6. GENERAL TROUBLESHOOTING

Problem	Cause	Solution
Gun with shoot spraying		See the manual of used pump
Low pressure of fluid outlet	Filters dirty	Clean filters
Sprout not uniform	Nozzle dirty or damaged	Clean gun parts very carefully
Leakage of paint from nozzle without activation of flow outlet	Seat ball and ball dirty from dried paint. Seat ball and ball damaged	Change damaged parts. Change seat ball and ball

7. DISPOSAL AND DEMOLITION OF EQUIPMENT

When maintenance is no longer possible, we recommend a replacement of the equipment. The gun cannot be abandoned in the environment but must be clean and disassembled into its component parts so that they can be disposed in waste collection centres. Any residue mixtures due to washing equipment should be stored in appropriate containers since their dispersion in the environment is harmful and therefore strictly prohibited.

Please keep in a safe place for future reference



POS.	COD.	DESCRIPTION
1	100031	Finger guard
2	100030	Gasket nozzle ST
3	020008	Diffuser 11/16"
	020008G	Diffuser 7/8"
4	020007	Handguard
5	020009	Needle
6	020014	Trigger shaft nut
7	020006	Trigger shaft
8	020001	Gun body
9	020015	Push rod
10	020011	Push rod tree
11	020012	Valve stem lock nut
12	020005	Trigger complete
13	100042R	Handle gasket
14	FM20XX	Gun filter
15	301500	Spring
16	100043R	Red Handle
17	121418R	Copper gasket
18	107000	M1/4" x M14x1mm L.45mm / Swivel
	107005	M16x1,5mmx M14x1mm L.47mm / Swivel
	505250	Repair Kit 11/16" (Pos. 3-5-11)
	505250G	Repair Kit 7/8" (Pos. 3-5-11)



Please look after the environment, dispose of all packaging in a responsible way. Always dispose of tools in accordance with local authority guidelines.

© 2022 Fast Mover Tools Ltd. This document is copyright and is not to be copied, circulated, distributed or shown to anyone other than the intended recipient without the express permission of the directors.

