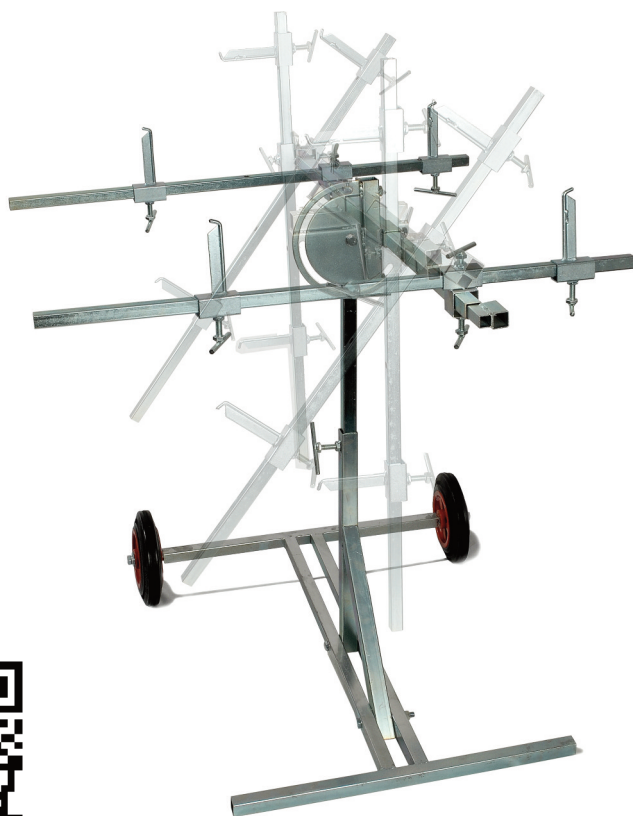


FMT1253

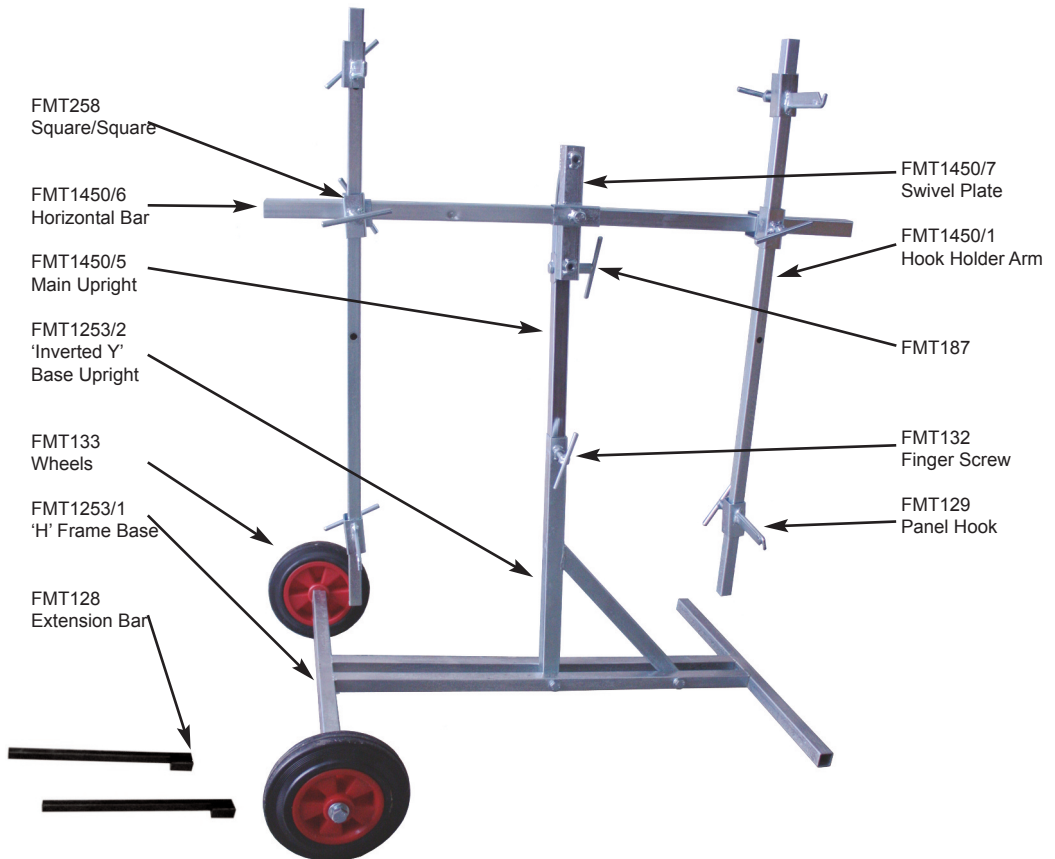
Panelmaster

Product Information Guide



Get latest FMT1253 information here

# Assembly Instructions



## Assembly Instructions

1. Bolt 'Inverted Y' base upright to FMT1253/1 base as shown using M10 x 100 screws and nylocs.
2. Attach wheels to base using hub tubes, M12 x 80 screws and locking washers.
3. Insert FMT1450/5, main vertical brace into 'Inverted Y' and secure with FMT132 Finger Screw.
4. Using M10 x 60 screw and nyloc secure FMT1450/7 swivel plate to main vertical brace. Ensure that it rotates freely.
5. Secure swivel plate with FMT187 swivel lock device.
6. Slide FMT1450/6 cross bar into swivel plate and secure with M10 x 40 screw through central hole.
7. Using FMT132 finger screws assemble FMT258 Square in Squares with FMT1450/1 hook holder arms in required positions. The finger screws go right through the locating holes in the arms. Secure assembly to cross bar and attach FMT129 panel hooks. All components are a 'sloppy-fit' to cope with paint build-up.
8. Extension arms FMT128 can be used for larger panels and also as a handle for relocating the stand.

Fast Mover Tools Ltd

T: 01582 661993 F: 01582 667100 E: sales@fastmovertoolsuk.com

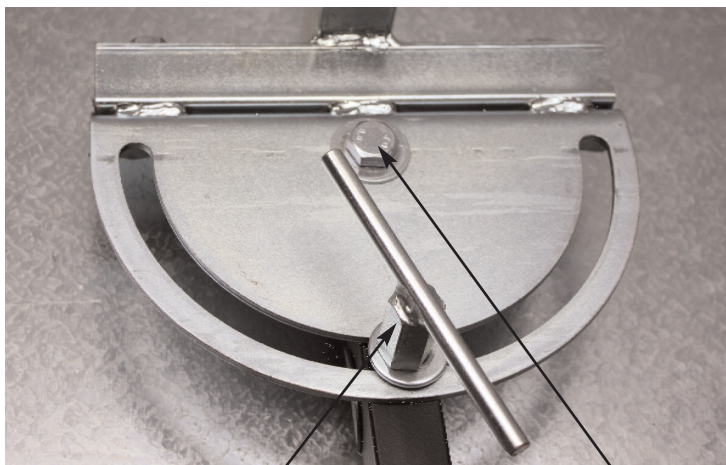
W: [www.fastmovertoolsuk.com](http://www.fastmovertoolsuk.com)

# Parts List

## Parts List

1	FMT1253/1	'H' Base Frame
1	FMT1253/2	'Y' Base Upright
2	FMT133	8" Wheels
1	FMT1253/4	Wheel and Base Fixing Kit Containing
	2	M12 x 80mm Set Screw
	2	M12 Spring Washer
	2	Wheel Inserts
	4	M10 Washer
	2	M12 Washer
	2	M10 x 100mm Set Screw
1	FMT1450/5	25mm Square x 800mm Vertical Brace
1	FMT1450/6	25mm Square x 900mm Cross Bar
2	FMT1450/1	20mm Square x 900 Hook Holder Arms
1	FMT1450/7	Swivel Plate (See last page)
1		Fixing Bag Containing;
	4	FMT129 Panel Hook
	2	FMT258 Square on Square
	1	FMT187 Swivel Locking Device
	1	M10 x 40mm Set Screw
	1	M10 x 50mm Set Screw
	2	M10 Washer
	1	M10 Nyloc
	9	FMT132 Finger Screws
	1	Instruction Sheet
2	FMT128	Extension Bar/Handle

# Swivel Mechanism



FMT187  
Swivel Locking Device

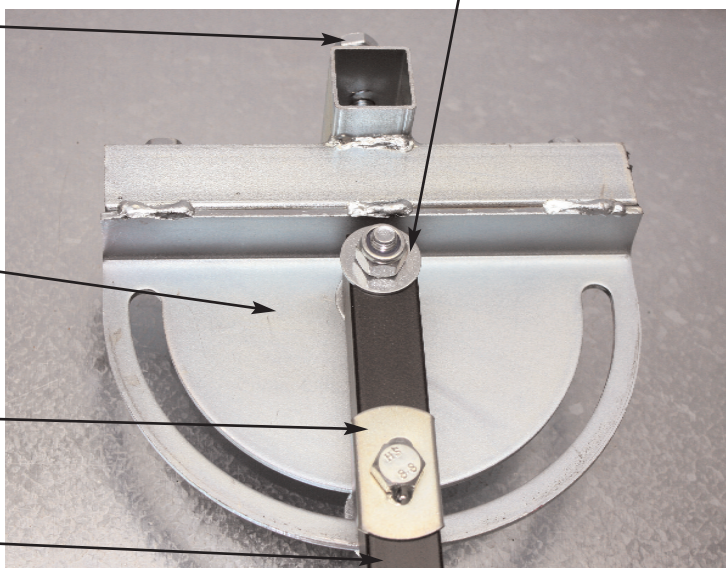
M10 x 50mm Set Screw  
M10 Washer  
M10 Nyloc

M10 x 40mm Set  
Screw

FMT1450/7  
Swivel Plate

Bent Washer  
(FMT187)

FMT1450/5  
Main Upright



Fast Mover Tools Ltd

T: 01582 661993 F: 01582 667100 E: [sales@fastmovertoolsuk.com](mailto:sales@fastmovertoolsuk.com)

W: [www.fastmovertoolsuk.com](http://www.fastmovertoolsuk.com)